



Mitochondrial delivery of mastoparan with transferrin liposomes equipped with a pH-sensitive fusogenic peptide for selective cancer therapy

Yuma Yamada^a, Yasuo Shinohara^b, Tomoyuki Kakudo^a, Shinji Chaki^a,
Shiroh Futaki^c, Hiroyuki Kamiya^a, Hideyoshi Harashima^{a,*}

^a *Laboratory for Molecular Design of Pharmaceutics, Graduate School of Pharmaceutical Sciences, Hokkaido University, Kita-12, Nishi-6, Kita-ku, Sapporo 060-0812, Japan*

^b *Division of Gene Expression, Institute for Genome Research, The University of Tokushima, Kuramoto-cho 3-18, Tokushima 770-8503, Japan*

^c *Institute for Chemical Research, Kyoto University, Uji, Kyoto 611-0011, Japan*

Received 24 April 2005; received in revised form 20 May 2005; accepted 5 June 2005

Available online 1 September 2005

Abstract

Mastoparan (MP), a potent facilitator of mitochondrial permeability transition (PT), could be used as an antitumor agent, if it were encapsulated in a tumor selective delivery system. We recently developed transferrin-modified liposomes (Tf-L) with a pH-sensitive fusogenic peptide (GALA), which delivers an encapsulated fluorescent marker into cytosol efficiently. In this study, we encapsulated MP into Tf-L with GALA for the selective delivery to mitochondria of tumor cells. The MP showed potent PT activity at concentrations above 25 μM in a homogenate of K 562 cells as well as in isolated mitochondria in the presence of phosphate. Tf-L equipped with cholesteryl GALA can release encapsulated sulforhodamine B, while Tf-L failed, as evidenced by confocal laser scanning microscopy. The MP, which was delivered with Tf-L with GALA, released cytochrome c (cyt c) from mitochondria to the cytosol, while free MP released cyt c not only to the cytosol but also extracellularly. These results demonstrate the utility of MP in Tf-L with GALA for cancer therapy.

© 2005 Elsevier B.V. All rights reserved.

Keywords: Mastoparan; Transferrin liposomes; GALA; Mitochondrial delivery; Anticancer therapy; Apoptosis

1. Introduction

Mastoparan (MP) is a 14-amino acid amphipathic peptide obtained from wasp venom (Zimmerberg and Parsegian, 1986) and it has been reported to induce a potent mitochondrial permeability transition (PT) in

* Corresponding author. Tel.: +81 11 706 3704;
fax: +81 11 706 3704.

E-mail address: harasima@pharm.hokudai.ac.jp
(H. Harashima).

the range of concentration between 5 and 100 μM by forming a permeability transition pore (PTP) (Pfeiffer et al., 1995). Therefore, MP could be used as an anti-tumor agent, if it could be delivered to tumor cells selectively, otherwise it would kill normal cells because of its potent PT activity.

We recently developed transferrin-modified liposomes (Tf-L) to target tumor cells which up-regulate Tf receptors. Tf-L can be internalized by tumor cells via Tf receptor-mediated endocytosis, but the encapsulated fluorescent marker is trapped in endosomal/lysosomal compartments and is not recycled to the plasma membrane. To solve this problem, we introduced a pH-sensitive fusogenic peptide, GALA, into Tf-L to enhance cytosolic release. We found that the GALA peptide, which was introduced into liposomal membrane as cholesteryl GALA (Chol-GALA), not in an aqueous phase as a free form, was able to exert cytosolic release activity (Kakudo et al., 2004).

In this study, we encapsulated MP into Tf-L equipped with Chol-GALA to release cytochrome c (cyt c) selectively in tumor. MP in free form can release cyt c not only in the cytosol but also to the medium, which indicates the non-specific action of this peptide. While, the Tf-L equipped with Chol-GALA has the ability to deliver MP to target tumor cells and it is internalized via a Tf receptor-mediated endocytosis and successfully delivers the MP to the cytosol without producing a non-specific action.

2. Experimental

2.1. Materials

K562 cells, human chronic myelogenous leukemia cells were obtained from the National Institute of Health Sciences (Japan). Roswell Park Memorial Institute (RPMI) 1640 medium, fetal bovine serum (FBS) were purchased from Invitrogen (Carlsbad, CA). A specific antibody against cyt c was prepared as described previously (Shinohara et al., 2002). The peptide chain of the MP (Pfeiffer et al., 1995) was synthesized using a Shimadzu automated solid-phase peptide synthesizer, model PSSM-8. Egg yolk phosphatidylcholine (EPC), cholesterol (Chol) and *N*-[3-(2-pyridylidithio)propionate]-1,2-dipalmitoyl-sn-glycerol-3-phosphatidylethanolamine (PDP-PE) were

purchased from Avanti Polar lipids (Alabaster, AL). Tf was obtained from Sigma (St. Louis, MO). Sulforhodamine B (Rho) was purchased from Molecular Probes (Eugene, OR). Chol-GALA was synthesized using a previously described procedure (Futaki et al., 1997; Kakudo et al., 2004).

2.2. Cell culture and preparation of homogenate solution, mitochondrial fraction

K562 cells were cultured in RPMI 1640 medium supplemented with 10% FBS under an atmosphere of 5% CO_2/air at 37 $^\circ\text{C}$.

A homogenate solution and a mitochondrial fraction were obtained from a total of 3.0×10^7 cultured K562 cells. Unless stated otherwise, all operations were performed on ice. The cells were washed with ice-cold phosphate-buffered saline (PBS (–)), resuspended in 1 mL of mitochondria isolation buffer (MIB) consisting of 0.25 M sucrose, 1 mM EDTA, 2 mM Tris–HCl (pH 7.4), and subjected to 20 strokes in a Dounce homogenizer to give a homogenate. The mitochondrial fraction was obtained from the homogenate solution using a differential centrifugation technique. The homogenate solution was centrifuged at $700 \times g$ for 10 min. The supernatant was then centrifuged at $16,000 \times g$ for 10 min to pellet the mitochondria. The pelleted mitochondrial fraction was resuspended in 50 μL MIB. This mitochondrial fraction was stored on ice prior to use.

2.3. Release activity of cyt c from mitochondria

A 5 μL aliquot of the MP was added to 50 μL of mitochondrial fraction in the presence and absence of 10 mM phosphate and incubated at 25 $^\circ\text{C}$ for 10 min. The suspension was then centrifuged at $20,400 \times g$ for 10 min at 4 $^\circ\text{C}$, and the supernatant retained as the supernatant fraction (S). The pelleted mitochondrial fraction was resuspended in 50 μL of PBS (–) to give the pellet fraction (P).

A 60 μL aliquot of the MP was added to 540 μL of homogenate in the presence and absence of 10 mM phosphate and incubated at 25 $^\circ\text{C}$ for 10 min. The suspension was then centrifuged at $700 \times g$ for 10 min on 4 $^\circ\text{C}$. The supernatant was centrifuged at $16,000 \times g$ for 10 min, the resulting supernatant was retained as the supernatant fraction (S). The pelleted

mitochondrial fraction was resuspended in 100 μL of PBS (–) to give the pellet fraction (P).

2.4. Western blotting

A 10 μL of sample was mixed with 10 μL of SDS-gel-loading buffer (100 mM Tris–HCl (pH 6.8), 4% SDS, 12% 2-mercaptoethanol, 20% glycerol, 0.05% bromophenol blue), subjected to 15% SDS-PAGE, and then electroblotted onto an Nitrocellulose filter (BM Equipment, Japan). Rabbit anti cyt c antibodies were used at a 1:1000 dilution and secondary HRP-conjugated anti rabbit antibodies (Amersham Biosciences, UK) were used at a 1:1000 dilution. The intensities of the immunodetected protein band corresponding to cyt c were determined by using the NIH image v.1.63 software.

2.5. Preparation of Tf-modified liposomes equipped with Chol-GALA

Liposomes were composed of EPC and Chol (2:1 molar ratio), and for cross-linking with Tf, PDP-PE was incorporated at 1.0 mol% of the total lipid. Liposomes were prepared by reverse phase evaporation (Szoka and Papahadjopoulos, 1978) followed by extrusion with a Mini Extruder (Avanti Polar Lipids), through 200 and 100 nm polycarbonate filters (Nuclepore), 11 times for each pore size. Rho was used as an aqueous phase marker. Unencapsulated Rho was separated by size-exclusion chromatography on a Bio-gel A 1.5 m column (100–200 mesh, BIO RAD) equilibrated with PBS (–). MP was encapsulated as the aqueous phase using a similar procedure. Chol-GALA was introduced into the liposomal membrane at 2 mol% of the total lipids. In this study, the encapsulation efficiencies of MP was assumed to be same as that of rhodamine which is frequently used as an aqueous marker of liposomes.

The attachment of Tf to liposomes was accomplished as described previously (Kakudo et al., 2004). The particle sizes of the liposomes were measured by means of dynamic light scattering spectrophotometry (ELS-8000, Photal Otsuka Electronics).

2.6. Intracellular trafficking of liposomes

K562 cells (5×10^4 cells/mL) in serum free medium were incubated with liposomes in which Rho was

encapsulated as an aqueous phase maker (final lipid concentration of 630 μM) for 6 h in the presence of $\text{Fe}_2(\text{SO}_4)_3$ –EDTA (final Fe^{3+} concentration of 100 μM). After incubation, the cells were washed twice with ice-cold PBS (–) and analyzed by confocal laser scanning microscopy.

2.7. Release activity of cyt c from mitochondria in living cells by Tf-L equipped with Chol-GALA encapsulating MP

A 30 μL aliquot of MP, Tf-L equipped with Chol-GALA encapsulating MP, and MIB were individually added to 300 μL of a K562 cell suspension (6×10^7 cells/mL K562 cells in serum free medium), and incubated at 37 °C for 10 min (final MP concentration of 100 μM) in the presence of $\text{Fe}_2(\text{SO}_4)_3$ –EDTA (final Fe^{3+} concentration of 100 μM).

The suspension was centrifuged at $110 \times g$ for 3 min at 4 °C, the supernatant was retained as the medium fraction (Me). After the removing supernatant, the pellet was washed with ice-cold PBS (–), resuspended in 330 μL of MIB, and subjected to 20 strokes in a Dounce homogenizer. The homogenate solution was then centrifuged at $700 \times g$ for 10 min at 4 °C. The supernatant was centrifuged at $16,000 \times g$ for 10 min, the supernatant obtained was retained as the cytosol fraction (Cy). The pelleted mitochondria fraction was resuspended in 50 μL of PBS (–) to give the mitochondrial fraction (Mt). Each sample was analyzed by western blotting.

3. Results and discussion

3.1. PT induction by MP

MP is a potent facilitator of PT (Pfeiffer et al., 1995). To determine the concentration of MP necessary for PT, MP was added to mitochondria isolated from K562 cells, and the cell homogenate. Cyt c was detected by western blotting using its specific antibodies. The cyt c release activity of MP was first estimated in the isolated mitochondria. MP (final concentration of 50 μM) was added to the isolated mitochondria in the presence and absence of phosphate, and then incubated at 25 °C for 10 min. As previously reported (Pfeiffer et al., 1995), cyt c was released from the mitochondria by the added

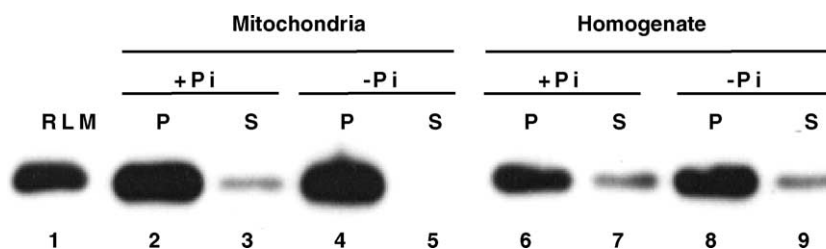


Fig. 1. PT induction by MP in isolated mitochondria and a K562 cell homogenate. MP (final concentration of 50 μM) was added to the isolated mitochondria and the K562 cell homogenate in the presence and absence of phosphate (Pi), followed by incubation at 25 $^{\circ}\text{C}$ for 10 min. The pellet fraction (P) and the supernatant fraction (S) were prepared as described in Section 2.3. Both fractions were subjected to a western blotting analysis using a specific antibody against cyt c. Lane 1, rat liver mitochondria (RLM); lanes 2–5, isolated mitochondria; lanes 6–9, homogenate of K562 cells. Please note that the P, Cy to S fraction was six times more concentrated than the Cy fraction in the experiments using the K562 cell homogenate.

MP in the presence of phosphate (Fig. 1), although the precise role of phosphate is unknown. We next measured the cyt c release activity of MP in a K562 cell homogenate, which are a better model for living cells than isolated mitochondria. MP (final concentration of 50 μM) was added to the K562 homogenate in the presence and absence of phosphate, followed by incubation at 25 $^{\circ}\text{C}$ for 10 min. In contrast to the isolated mitochondria, cyt c was also released from mitochondria in the absence of phosphate (Fig. 1). The amounts of cyt c released by various concentrations of MP, with or without phosphate, were similar, as estimated by quantitative western blotting (Fig. 2). Approximately $\sim 50\%$ of the cyt c was released from the mitochondria in both cases upon the addition of 50 μM MP. The MP showed potent activity for PT, at concentrations above 25 μM .

These results suggest that the concentration of phosphate in the homogenate was sufficient for the release of cyt c. Thus, the delivery of more than 25 μM MP into the cytosol could induce PT and, hence, exert cytotoxic effects.

3.2. Efficient internalization and endosomal escape by Tf-L equipped with Chol-GALA

The cyt c release activity of MP makes it as an attractive antitumor agent when a tumor-selective delivery system is used. We recently developed a Tf-L to target tumor cells which up-regulate Tf receptors (Kakudo et al., 2004). In addition, we also found that the delivery of the contents into the cytosol by pH-sensitive fusogenic peptide GALA was efficient. Thus, MP in the

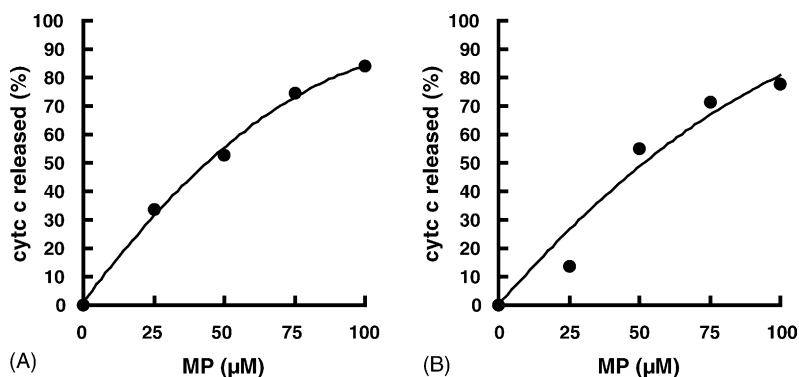


Fig. 2. Amount of cyt c released from mitochondria by various concentrations of MP. MP (final concentrations of 25, 50, 75, 100 μM) was added to the K562 cell homogenate in the presence and absence of phosphate, followed by incubation at 25 $^{\circ}\text{C}$ for 10 min. After preparing the pellet fraction and the supernatant fraction, the cyt c content of both fractions was determined by western blotting. The percent release of cyt c (%) was calculated from the intensities of the immunoblotted protein band of the supernatant fraction divided by the total of the supernatant and pellet fractions, multiplied by 100. A, with phosphate; B, without phosphate.

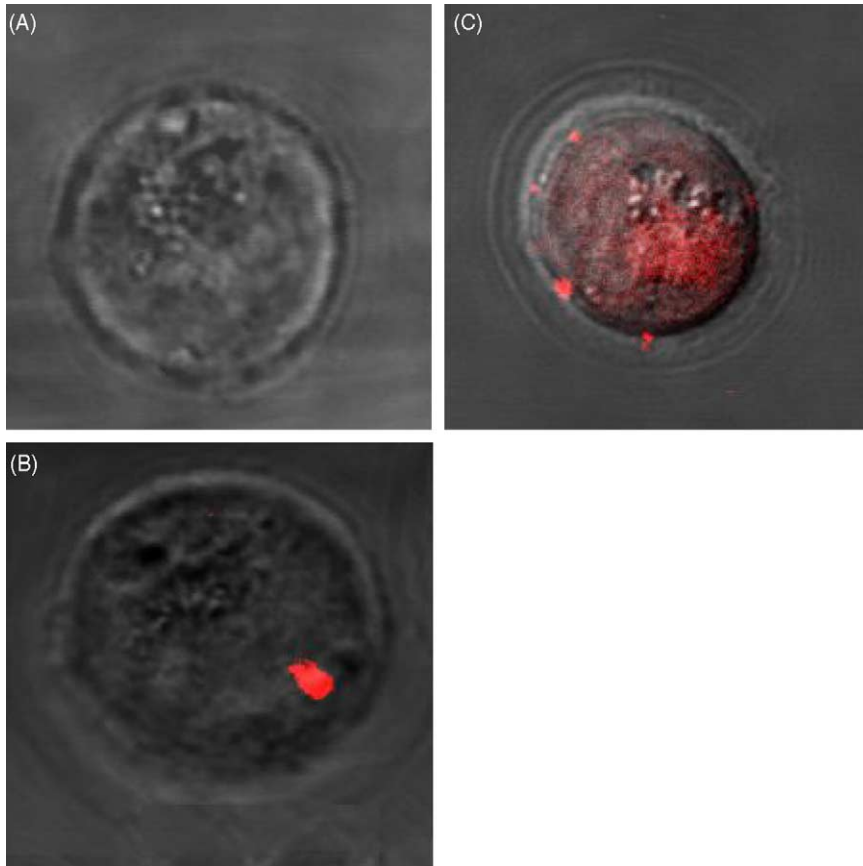


Fig. 3. Efficient cytosolic release of liposomally encapsulated Rho from Tf-L equipped with Chol-GALA. Liposomes encapsulation Rho as an aqueous phase marker were incubated with K562 cells at 37 °C for 6 h and then analyzed by confocal laser scanning microscopy. Non-modified liposomes (A), Tf-L (B), and Tf-L equipped with Chol-GALA (C).

Tf-L equipped with Chol-GALA effectively exerted cytotoxic activity in tumor cells. To achieve the targeted delivery of MP into tumor cells, we had planned to use this Tf-L equipped with Chol-GALA encapsulating MP. When Rho was encapsulated, Tf-L with GALA effectively delivered the fluorescence marker into the cytosol of K562 cells (Fig. 3). In contrast, Tf-L without GALA did not release the marker into the cytosol, suggesting that it remained trapped in endosomes/lysosomes.

3.3. Cytotoxic effects of MP encapsulated in liposomes

To examine the usefulness of encapsulating MP into Tf-L equipped with Chol-GALA, K562 cells were

treated with MP in the liposomes and in free form, and the induction of PT was compared.

When MP (final concentration of 100 μ M) was directly added to a K562 culture medium, cyt c was detected in the culture medium as well as in the cytosol (Fig. 4). This indicates that MP entered the K562 cells through the cell membrane (Matsuzaki et al., 1996), and cyt c, after release from the mitochondria, leaked out through the disrupted cell membrane. Thus, encapsulation appears to be highly important in preventing the non-specific action of this peptide. On the other hand, Tf-L equipped with Chol-GALA encapsulating MP (final concentration of 100 μ M as MP) was added to a K562 cell culture medium, cyt c was detected in the cytosol but not in the culture medium (Fig. 4). A calculation indicated that 48% of the cyt c was

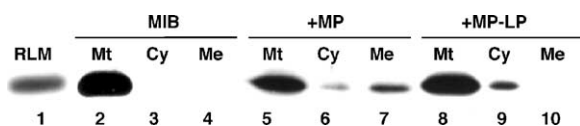


Fig. 4. Cytotoxic effects of MP encapsulated in liposomes. MP was added to K562 cells, followed by incubation at 37 °C for 10 min. Mitochondrial fraction (Mt), cytosol fraction (Cy), and medium fraction (Me) were obtained as described under Section 2.7. Each sample was analyzed by western blotting to detect cyt c. Lane 1, rat liver mitochondria (RLM); lanes 2–4, mitochondrial isolated buffer (MIB); lanes 5–7, MP (final concentration of 100 μ M); lanes 8–10, Tf-L equipped with Chol-GALA encapsulating MP (final concentration of 100 μ M MP). Please note that the Mt fraction was six times more concentrated than the Cy fraction.

released from the mitochondria. Thus, MP was successfully delivered into the cytosol without producing any non-specific action, and the encapsulated MP peptide did not leak from the liposomes to outside the cells. These results provide a clear demonstration of the utility of MP in Tf-L equipped with Chol-GALA for cancer therapy.

3.4. Towards use of MP as an antitumor reagent

The findings herein show that Tf-L equipped with Chol-GALA encapsulating MP is a potentially useful cytotoxic agent that is selective for tumor cells. These types of liposomes, when their diameters are adjusted to \sim 100 nm, could deliver drugs to tumor cells over-expressing the Tf-receptor in vivo (Ciechanover et al., 1983; Ishida et al., 2001). This cell-selective incorporation of liposomes would be expected to occur via receptor-mediated endocytosis (Fig. 5). Attaching the pH-sensitive fusogenic peptide GALA to the surface of the liposomes facilitates their endosomal escape (Kakudo et al., 2004). In addition, Tf-L without GALA encapsulating MP did not induce PT in our preliminary experiments (data not shown), indicating importance of the GALA attachment. MP, after escaping from both liposomes and endosomes, can induce the PT of mitochondria, thus releasing cyt c is released (Fig. 5). This proposed intracellular trafficking of MP could explain the results obtained in this study (Fig. 4).

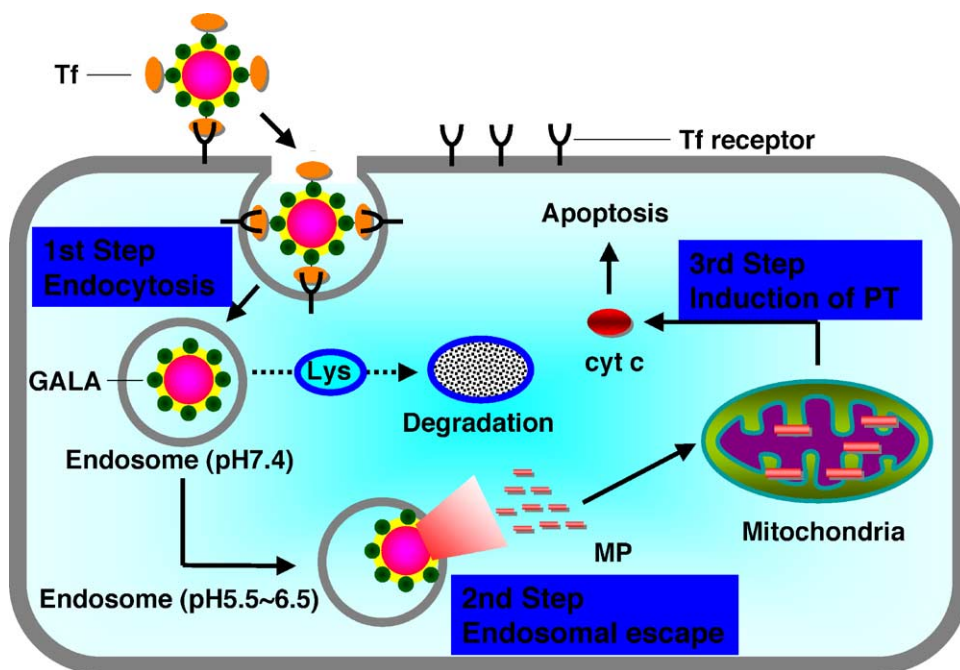


Fig. 5. Intracellular trafficking of MP in Tf-L equipped with Chol-GALA. Tf-L equipped with GALA can be internalized by tumor cells via receptor-mediated endocytosis (1st step). In the endosomes, GALA can enhance the fusion between liposomes and endosomes at a lower pH and MP is released to the cytosol (2nd step). MP that escapes from the endosomes can attack the mitochondria, PT is induced, and cyt c is released from the mitochondria (3rd step).

When Tf-L equipped with Chol-GALA encapsulating MP was added to K562 cells, 48% of the cyt c was released from the mitochondria. We roughly estimate that the concentration of MP in the cytosol was $\sim 50 \mu\text{M}$ based on the ratio of released cyt c to the total cyt c (Fig. 2). This suggests that internalization of the liposomes into the cells and the endosomal escape of MP were highly effective. To use the MP as an antitumor agent, further improvements of in delivery system will be necessary. Studies concerning this are currently in progress.

Acknowledgments

This work was supported, in part, by Grants-in-Aid from the Ministry of Education, Culture, Sports, Science and Technology of Japan, by the Japan Society for the Promotion of Science and by the Nagase Science and Technology Foundation.

References

- Ciechanover, A., Schwartz, A.L., Dautry-Varsat, A., Lodish, H.F., 1983. Kinetics of internalization and recycling of transferrin and the transferrin receptor in a human hepatoma cell line. Effect of lysosomotropic agents. *J. Biol. Chem.* 258, 9681–9689.
- Futaki, S., Ishikawa, T., Niwa, M., Kitagawa, K., Yagami, T., 1997. Embodying a stable alpha-helical protein structure through efficient chemical ligation via thioether formation. *Bioorg. Med. Chem.* 5, 1883–1891.
- Ishida, O., Maruyama, K., Tanahashi, H., Iwatsuru, M., Sasaki, K., Eriguchi, M., Yanagie, H., 2001. Liposomes bearing polyethyleneglycol-coupled transferrin with intracellular targeting property to the solid tumors in vivo. *Pharm. Res.* 18, 1042–1048.
- Kakudo, T., Chaki, S., Futaki, S., Nakase, I., Akaji, K., Kawakami, T., Maruyama, K., Kamiya, H., Harashima, H., 2004. Transferrin-modified liposomes equipped with a pH-sensitive fusogenic peptide: an artificial viral-like delivery system. *Biochemistry* 43, 5618–5628.
- Matsuzaki, K., Yoneyama, S., Murase, O., Miyajima, K., 1996. Transbilayer transport of ions and lipids coupled with mastoparan X translocation. *Biochemistry* 35, 8450–8456.
- Pfeiffer, D.R., Gudz, T.I., Novgorodov, S.A., Erdahl, W.L., 1995. The peptide mastoparan is a potent facilitator of the mitochondrial permeability transition. *J. Biol. Chem.* 270, 4923–4932.
- Shinohara, Y., Almofti, M.R., Yamamoto, T., Ishida, T., Kita, F., Kan-zaki, H., Ohnishi, M., Yamashita, K., Shimizu, S., Terada, H., 2002. Permeability transition-independent release of mitochondrial cytochrome c induced by valinomycin. *Eur. J. Biochem.* 269, 5224–5230.
- Szoka Jr., F., Papahadjopoulos, D., 1978. Procedure for preparation of liposomes with large internal aqueous space and high capture by reverse-phase evaporation. *Proc. Natl. Acad. Sci. U.S.A.* 75, 4194–4198.
- Zimmerberg, J., Parsegian, V.A., 1986. Polymer inaccessible volume changes during opening and closing of a voltage-dependent ionic channel. *Nature* 323, 36–39.